

Light Meter (Lux/FC)

 **840020**
Instruction Manual

 **SIAFA**
www.siafa.com.ar

SPER
SCIENTIFIC

Environmental Measurement Instruments

Light Meter (Lux/FC) - 840020

Copyright ©2015 by Sper Scientific

ALL RIGHTS RESERVED

Printed in the USA

The contents of this manual may not be reproduced or transmitted in any form or by any means electronic, mechanical, or other means that do not yet exist or may be developed, including photocopying, recording, or any information storage and retrieval system without the express permission from Sper Scientific.

TABLE OF CONTENTS

INTRODUCTION	3
PANEL DESCRIPTION	3
OPERATING INSTRUCTIONS.....	4
GENERAL MEASUREMENT.....	4
HOLD & PEAK HOLD	4
RECORD MAX/MIN.....	5
NOTES & PRECAUTIONS.....	5
ZERO ADJUSTMENT & CALIBRATION.....	5
BATTERY REPLACEMENT	6
SPECIFICATIONS	6
LIGHT SPECTRUM CHART.....	7
WARRANTY.....	8

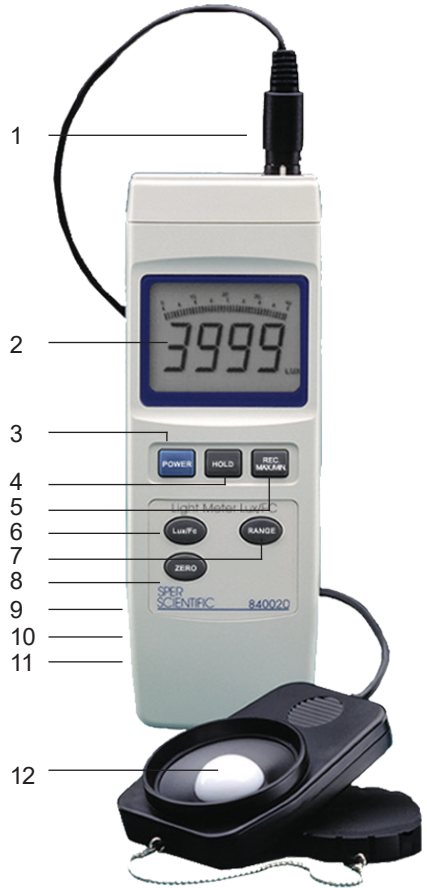
INTRODUCTION

Monitor light levels anywhere with fast, stable and accurate response. Results are easily read on the extra large LCD with bar graph, low battery and over range indications. The color and cosine corrected sensor meets C.I.E. photopic spectrum. Also features max-min, auto power off, zero adjustment, hold function and a tripod back.

Comes ready to use with a 9V battery, instructions, soft padded case, and a detachable sensor with cover for easier replacement or repair.

PANEL DESCRIPTION

- 1. Sensor Input & Sensor Plug
- 2. Display
- 3. Power Button
- 4. Hold Button
- 5. Rec. Min/Max Button
- 6. Lux/FC Button
- 7. Range Button
- 8. Zero Button
- 9. Tripod Screw (on back)
- 10. Stand (on back)
- 11. Battery Cover (on back)
- 12. Photo Sensor



Measurement Procedures

1. Insert the **SENSOR** plug into the **SENSOR INPUT** and turn the meter on by pressing the **POWER** button.
2. Remove the lens cap from the **PHOTO SENSOR**.
3. Select the desired unit of measure by pressing the **LUX/FC** button.
4. Select the maximum range by pressing the **RANGE** button. If the out of range indicator “- - - -” appears, select another range or discontinue use. For the highest accuracy, select the range that offers the highest resolution (most number of digits after the decimal point).
5. Point the **PHOTO SENSOR** toward the source and read the results on the display.
6. The instrument has an automatic shut off function in order to prolong battery life. After approximately 10 minutes without activity (no buttons pushed), the meter will automatically shut off. To disable this feature, press the **REC MAX/MIN** button.
7. Press the **POWER** button to manually turn the meter off.

Hold

1. During measurement, press **HOLD** to freeze the measured value.
2. “HOLD” and the value are displayed.

Peak Hold

1. During measurement, press the **HOLD** button for 2 to 3 seconds.
2. “Peak HOLD” and the peak value are displayed and updated if exceeded.
3. To erase the peak value, press the **HOLD** button once (the display will flash).
4. To exit this function, press the **HOLD** button for at least 2 seconds.

Record Maximum / Minimum

1. Press the **REC MAX/MIN** button once to enter the recording mode. “REC” and the recorded values are displayed and continuously updated.
2. Press the **REC MAX/MIN** button as needed to view the recorded Max and Min values. “REC Max” and the maximum recorded value or “REC Min” and the minimum recorded value are displayed.

Note...

The Max/Min values are frozen and not updated until the meter returns to recording mode.

3. To return to recording mode, press the **HOLD** button. “REC” is displayed without “Max” or “Min”.
4. To erase the recorded Max/Min values and exit the recording mode, press the **REC MAX/MIN** button for at least 2 seconds.

Notes and Precautions

- Avoid range overload.
- When using **PEAK HOLD** or **REC MAX/MIN** your measurements must be within the selected range, if not, the out of range indicator “- - -” will be displayed.
- Cover the **PHOTO SENSOR** with the sensor cap when the meter is not in use.
- Fluctuations in the reading are often due to shadows or a weak battery. Also, ambient temperatures and drafts may affect the reading.
- Do not store in areas of high temperature and/or humidity.
- Remove the battery for long-term storage.

ZERO ADJUSTMENT AND CALIBRATION

1. With the sensor cover securely in place and the meter turned on, use the **RANGE** button to select the 40.00 Lux range (digits appear on the LCD).
2. Press the **ZERO** button and the “0.00 LUX” should be displayed.
3. To maintain accuracy, annual laboratory calibration is recommended and available from Sper Scientific.

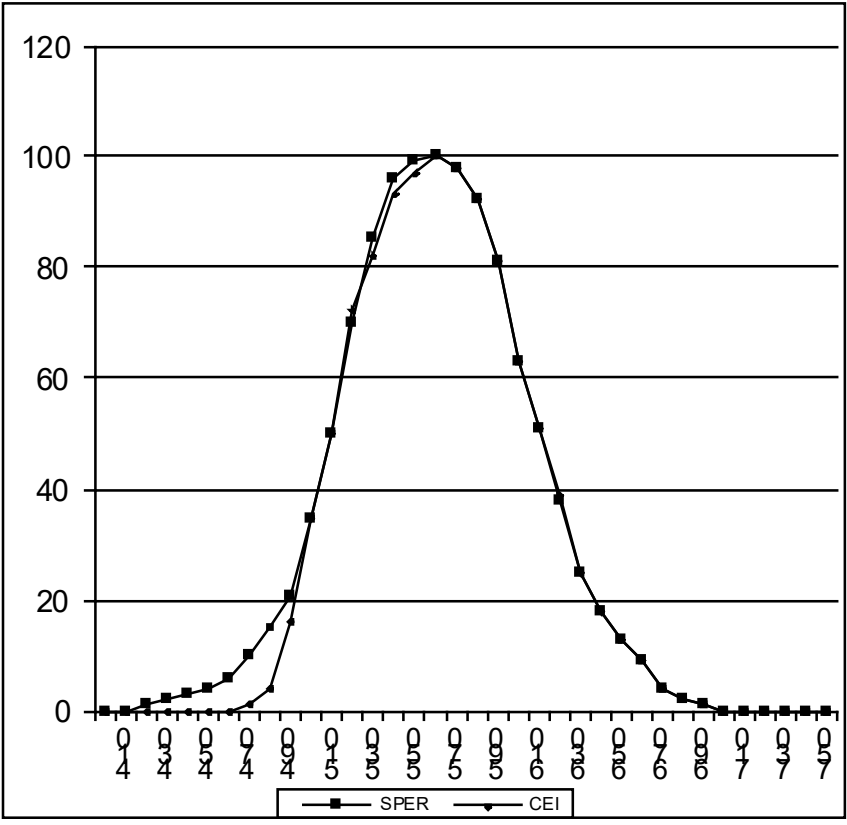
BATTERY REPLACEMENT

1. Replace the battery when the low battery icon is displayed.
2. In-spec measurements may be made for several hours after the low battery indicator appears.
3. Remove the **BATTERY COVER** screw and slide the cover off.
4. Replace the battery with a fresh 9V battery (alkaline or heavy duty).

SPECIFICATIONS

Unit of Measure	Range	In-Range Display	Resolution	Accuracy
Lux	40.00	0 to 40,000	0.01	$\pm(3\% \text{ rdg} + 0.5\% \text{ F.S.})$
	400.0	36.6 to 400.0	0.1	
	4,000	360 to 4,000	1	
	40,000	3,600 to 40,000	10	
	400,000	10,000 to 400,000	100	$<100,000 \pm (3\% \text{ rdg} + 0.5\% \text{ F.S.}).$ $>100,000$ for reference only
Foot Candle	4.000	0 to 3.720	0.001	$\pm(3\% \text{ rdg} + 0.5\% \text{ F.S.})$
	40.00	3.35 to 37.20	0.01	
	400.0	33.5 to 372.0	0.1	
	4,000	335 to 3,720	1	
	40,000	930 to 37,200	10	$< 9,300 \pm (3\% \text{ rdg} + 0.5\% \text{ F.S.}).$ $>9,300$ for reference only
Accuracy tested by a standard parallel light, tungsten lamp of 2856°K.				
Out of Range Indicator	"- - -" appears at the top of the display for over-range, or at the bottom of the display for under-range.			
Power Supply	One 9V battery, current approx. DC 8mA			
Operating Environment	32 to 122°F (0 to 50°C), Less than 80% RH			
Dimensions	7¾" × 2¾" × 1¼" (197 × 70 × 32 mm)			
Weight	10 oz (283 g)			

LIGHT SPECTRUM CHART



WARRANTY

Sper Scientific warrants this product against defects in materials and workmanship for a period of **five (5) years** from the date of purchase, and agrees to repair or replace any defective unit without charge. If your model has since been discontinued, an equivalent Sper Scientific product will be substituted if available. This warranty does not cover probes, batteries, battery leakage, or damage resulting from accident, tampering, misuse, or abuse of the product. Opening the meter to expose its electronics will break the waterproof seal and void the warranty.

To obtain warranty service, ship the unit postage prepaid to:

SPER SCIENTIFIC LTD.

8281 East Evans Road, Suite #103
Scottsdale, AZ 85260

The defective unit must be accompanied by a description of the problem and your return address. Register your product online at www.sperwarranty.com within 10 days of purchase.



SIAFA[®]
Higiene Ocupacional y Medio Ambiente

www.siafa.com.ar
ventas@siafa.com.ar

☎ **011 4684 2232**