

EDGE 4 AND 5

PERSONAL NOISE DOSIMETERS

Edge Personal Noise Dosimeters offer a compact, rugged and easy to use way to monitor worker exposure to noise levels. Using accurate type-2 microphones and multiple virtual dosimeters, Edge noise dosimeters are powerful and intuitive instruments for understand hearing loss threats in all environments.



Applications

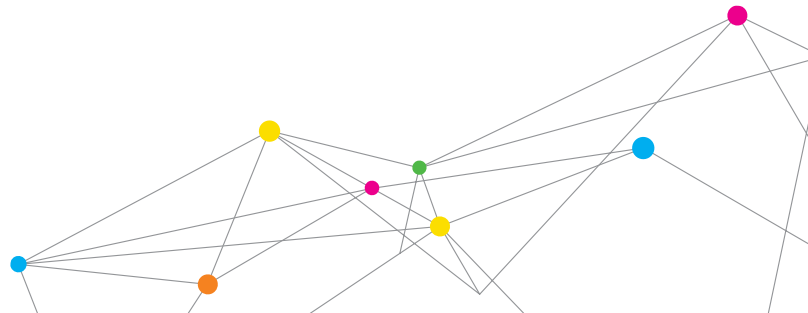
- + Worker noise exposure in several markets including: industrial manufacturing, mining, oil and gas, utilities, transportation and distribution centers, airports and textiles
- + Task based measurements
- + Determination if hearing protection is needed

Features

- + Compact, 3-ounce (85 grams) unit mounts easily to the shoulder
- + Large display with easy-to-use interface provides critical information at a glance
- + LED Dose indicator flashes when levels have been exceeded
- + Up to three independent dosimeters that can simultaneously measure against separate industry standards
- + The Edge 5 has MSHA, ATEX, IECEx, M1, CSA (US/Canada) approvals

Choose Your Model

	Edge 4 Noise Dosimeter	Edge 5 Noise Dosimeter
Product No.	eg4-D	eg5-D
Data Logging	+	+
Battery Life	60+ hours	40 hours
Lock Out Security Function	+	+
LED Dose Indicator	+	+
No. of Independent Dosimeters	2	3 (third dosimeter enabled through DMS software)
IP Rating	IP-65	IP-65
MSHA Approval		+
Intrinsic Safety Approval		+





Functional Requirements Include

Microphone	1/4 inch prepolarized condenser (electret) field replaceable threaded microphone
Measuring Range	70dB - 140dB
Windscreen	Rugged foam

Dosimeter

Independent Thresholds	Selectable from 70dB to 90dB or none
Independent Exchange Rates	3dB, 4dB or 5dB for each dosimeter
Independent Criterion Levels	From 70dB to 90dB in 1dB increments

Measurement Settings

RMS Range	70dB to 140dB
RMS Weighting	A or C
RMS Time Response	Fast or Slow
Frequency Weighting	A, C, Z

Peak Detector

Peak Range	110dB to 143dB
Peak Weighting	Selectable C or Z for eg4; Selectable A, C, or Z for the eg5 model (Peak is independent of the RMS dosimeter settings)

Displayed Data / Values

+ L _{AVG} or L _{EQ}	+ Current Date
+ Exposure	+ L _{C-A} (eg5)
+ SPL	+ Max Level
+ Min Level	+ SEL (L _{EP})
+ Dose	+ Threshold (TR)
+ TWA	+ Peak Level
+ Upper Limit (UL)	+ Run Time
+ Identity Field (assigns a custom name to The Edge)	+ Projected Dose (eg5)

Power / Electrical Characteristics

Battery	Lithium Polymer (Flat cell)
Battery Life	eg4 model 60+ hours, eg5 intrinsically safe 40 hours nominal without LED activated
Battery Charge	Quick charge in EdgeDock in 2 to 4 hours. Recommended daily download data with simultaneous battery charging for maximum efficiency
Memory Capacity	180 hours
Communications	Short haul serial Infrared (SIR) via the EdgeDock

Standards

ANSI S1.25 Personal Noise Dosimeters	
IEC61252 Personal Sound Exposure Meters	
Intrinsic Safety (eg5)	+ EN 60079-0:2006, EN 60079-11:2007, EN 60079-26:2007 + IECEx certification number: SIM 08.0012 + ATEX Directive 94/9/EC for use in Potentially Explosive Atmosphere xcertification number: Sira 09ATEX2269 + CSA International (US and Canada) certificate number: 2283414 + MSHA Approval number: 18-A10008-0

All specifications are subject to change without notification.

Quest is a trademark, and TSI and the TSI Logo are registered trademarks of TSI Incorporated.



TSI Incorporated - Visit our website www.tsi.com for more information.

USA	Tel: +1 800 874 2811	India	Tel: +91 80 67877200
UK	Tel: +44 149 4 459200	China	Tel: +86 10 8219 7688
France	Tel: +33 1 41 19 21 99	Singapore	Tel: +65 6595 6388
Germany	Tel: +49 241 523030		

